



INSTRUKCJA MONTA U WAGONÓW: 202L/1, 202Lc, 211K **MONTAGEANLEITUNG WAGEN: 202L/1, 202Lc, 211K**

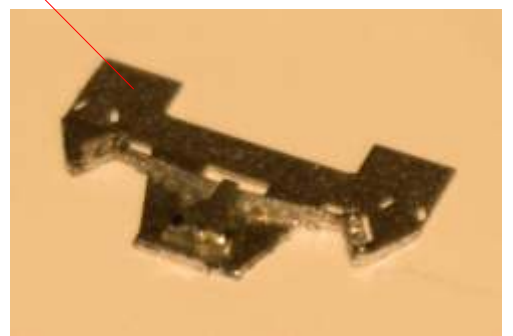
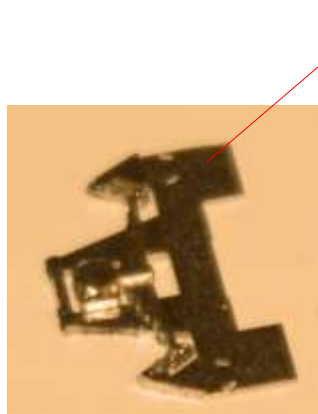
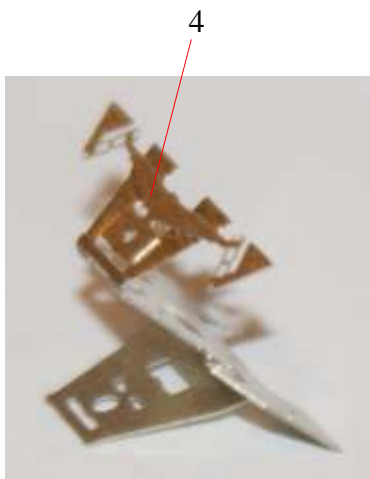
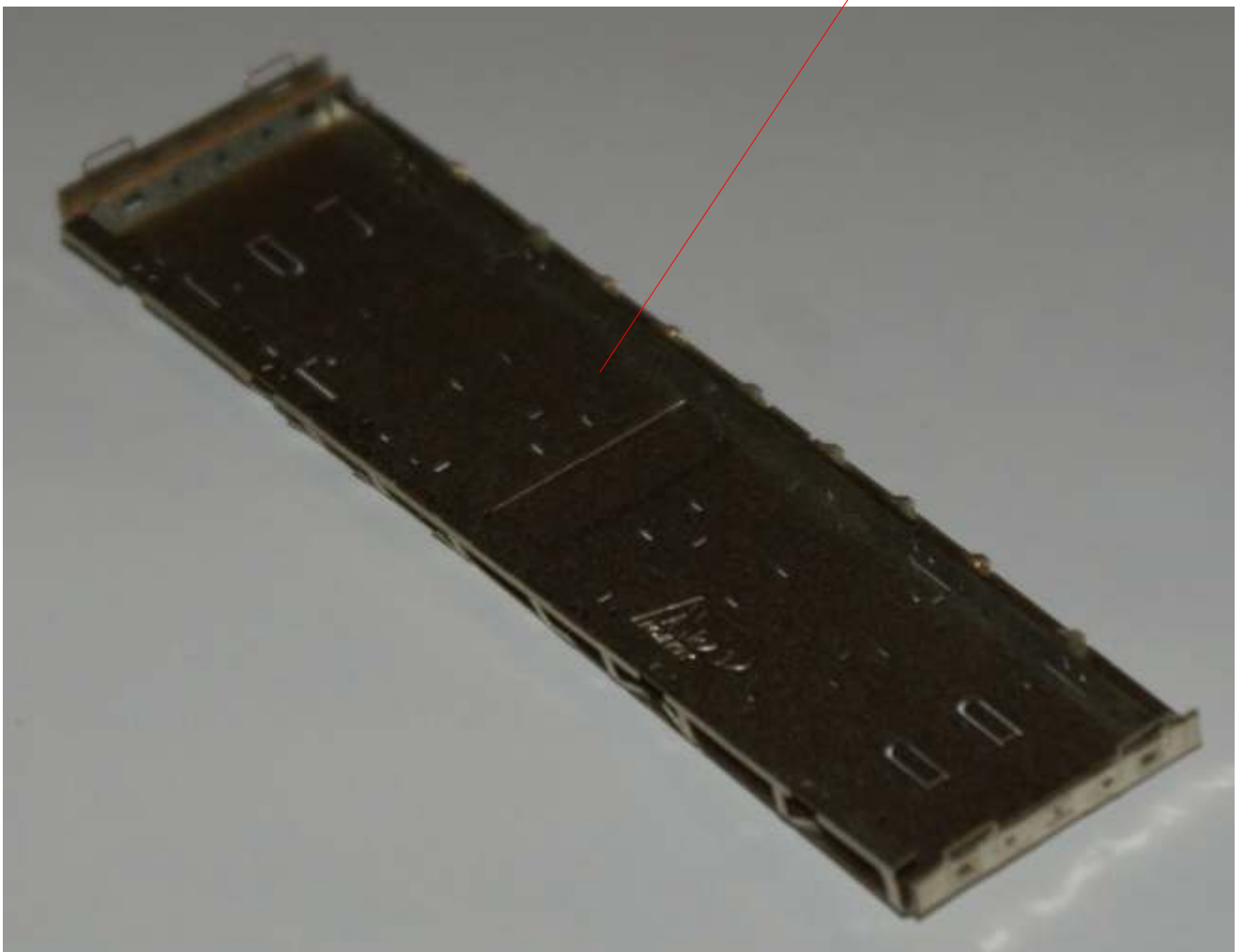
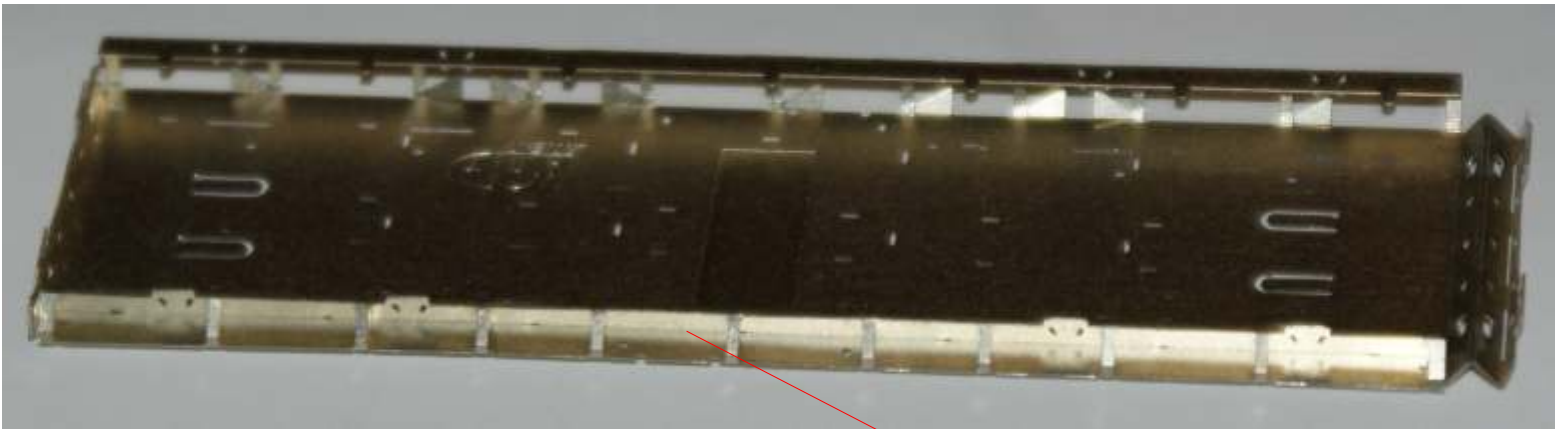
Zestaw zawiera:

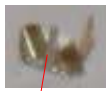
- 2 blaszki z cz. ciarnymi
- kalkomanie
- 2 zestawy kołowe
- 4 zderzaki
- 2 sprz. gi z kinematyk

UWAGA! Je li w instrukcji nie napisano inaczej, wszystkie zagi cia o 90 stopni zaginamy podtrawieniem do wewn. trz., a o 180 stopni - na zewn. trz.

Der Bausatz enthält:

- 2 Platinen mit Bauteilen
- Naßschiebebilder (Decals)
- 2 Radsätze
- 4 Puffer
- 2 Kupplungen mit KKK





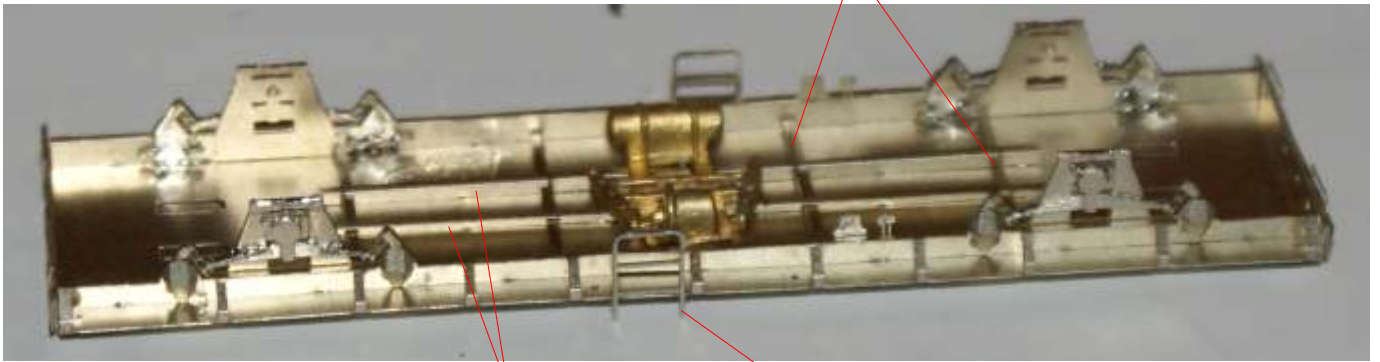
6



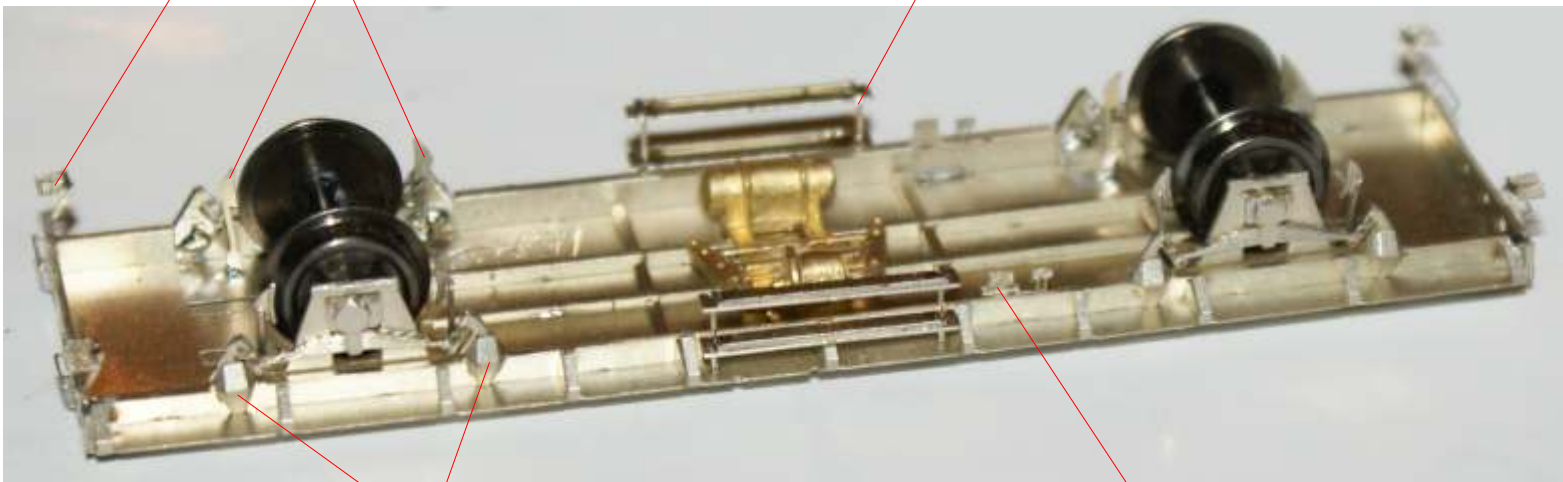
13



13



2



13

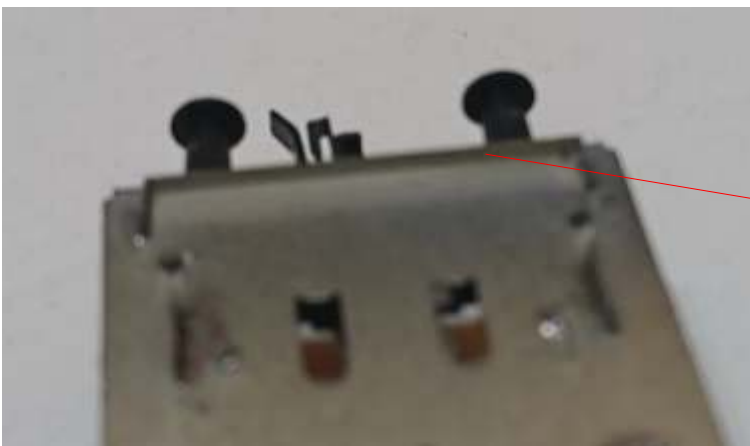
9

3

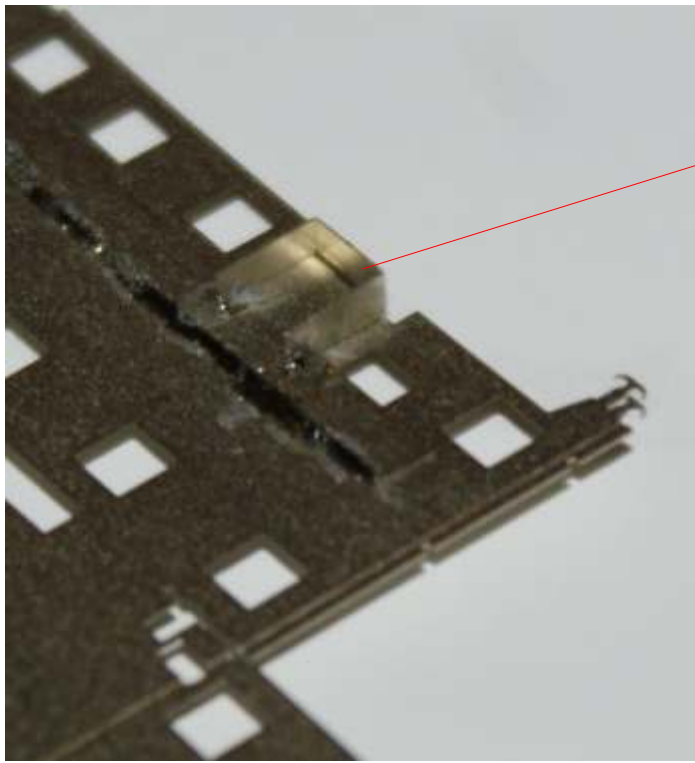
10 ? 11+12

6

7



8

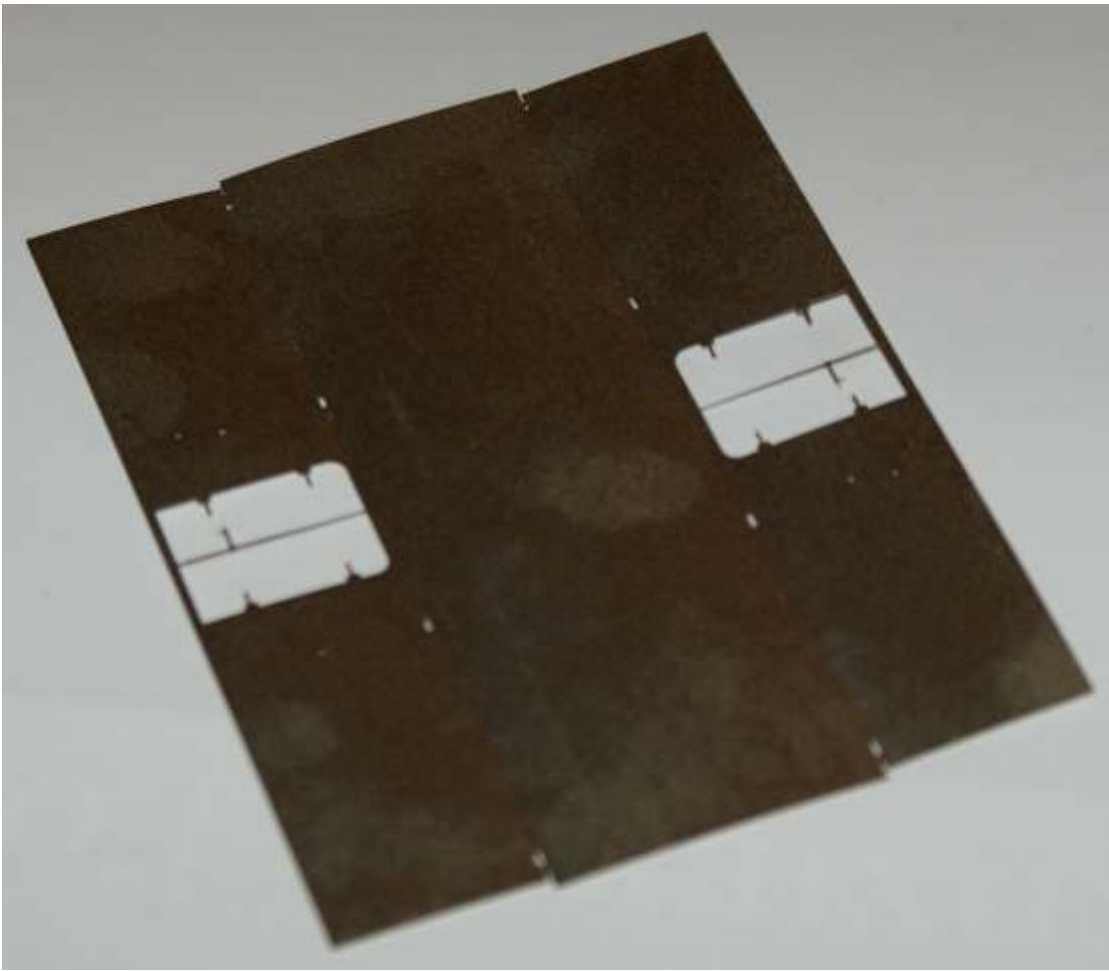


19 202L
17 211K

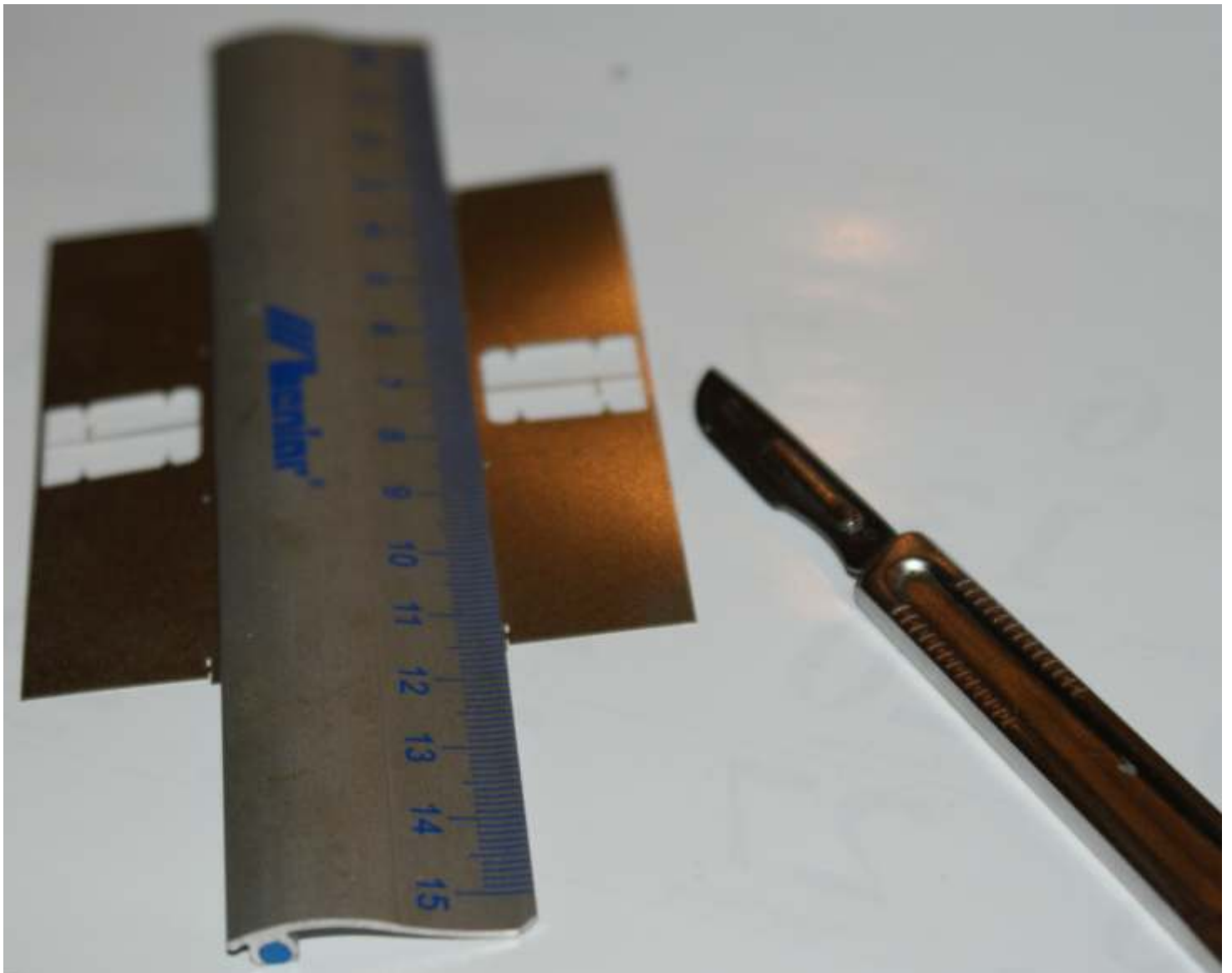


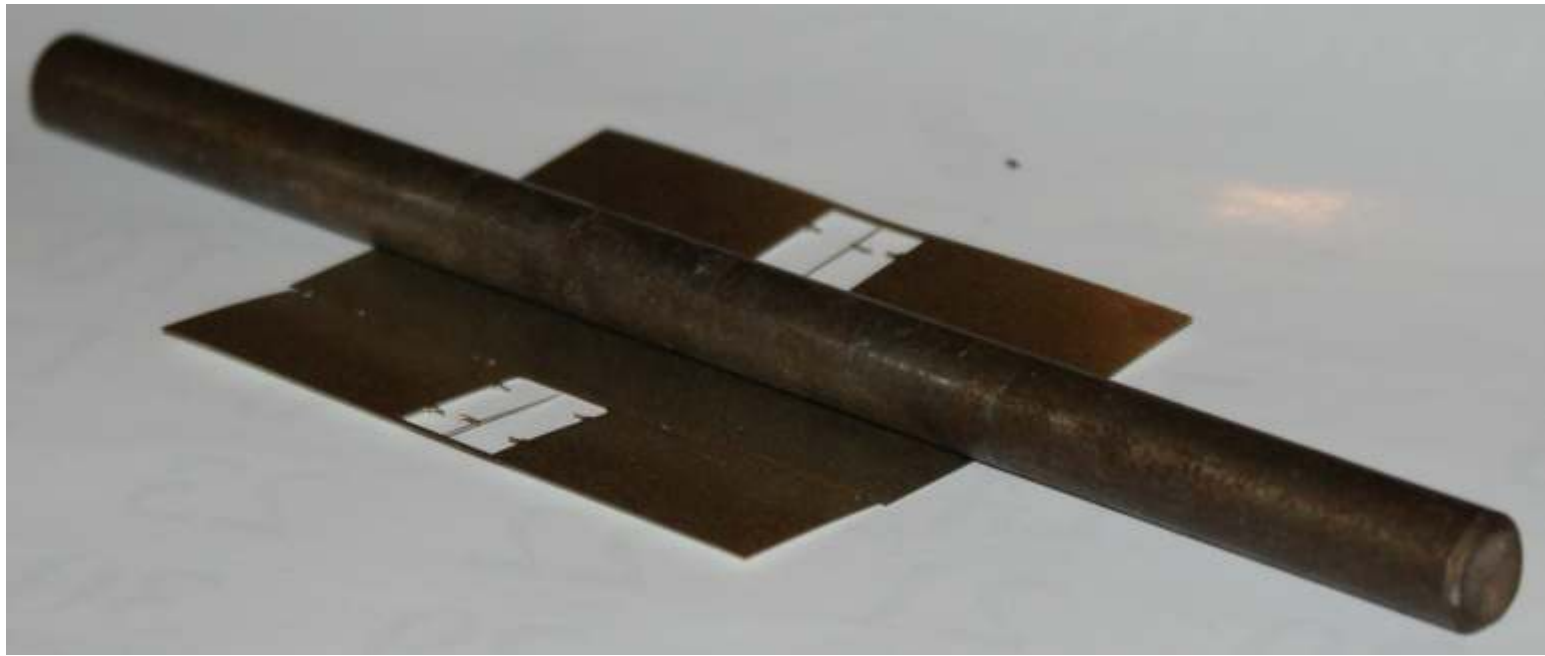
W wagonach 202L z małymi stopniami bocznymi /cz. 10/ i 211K obci po jednym uchwycie jak na zdjęciach niżej.



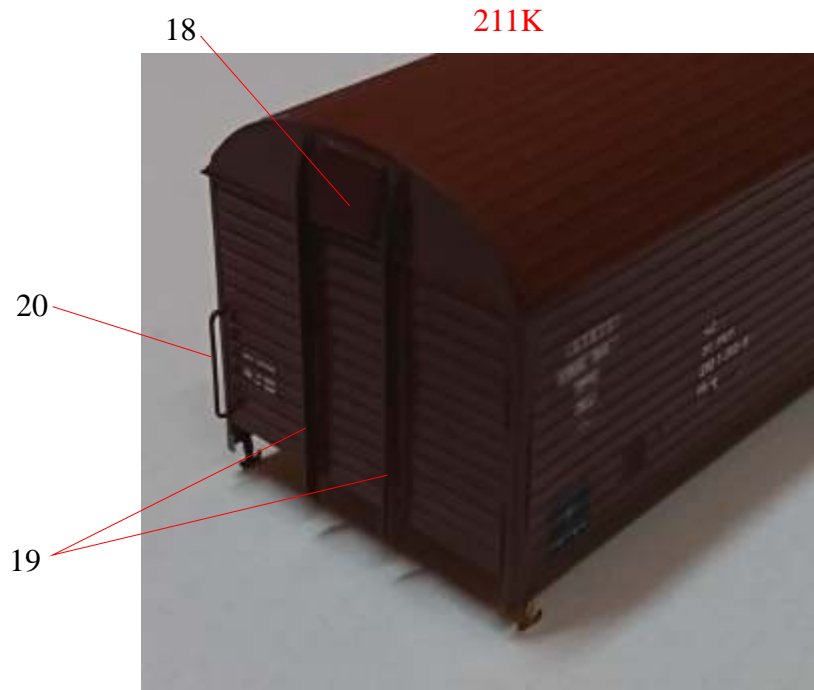


Zagięcie cian bocznych i dachu delikatnie przeci gn ostrzem no a od wewn trznej strony przykładaj c linijk wzdłu podtrawie na ko cu cian.



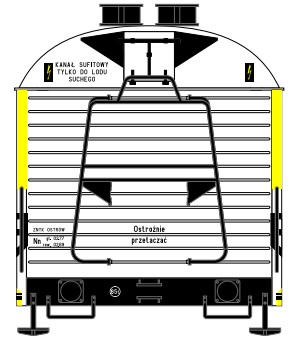
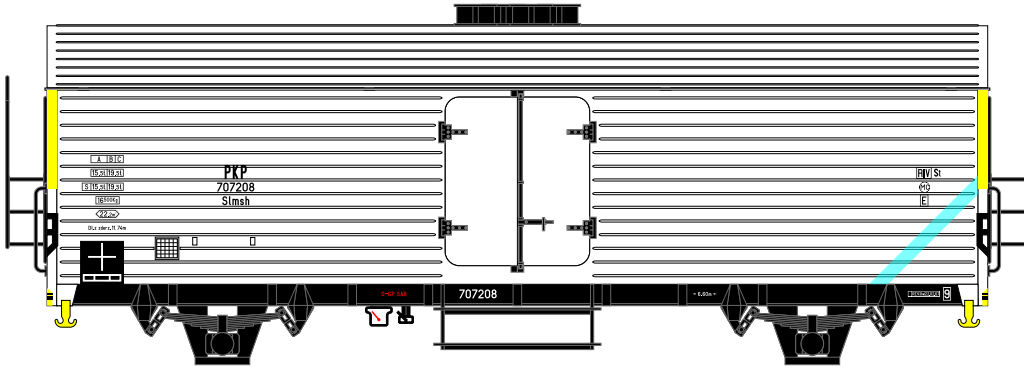
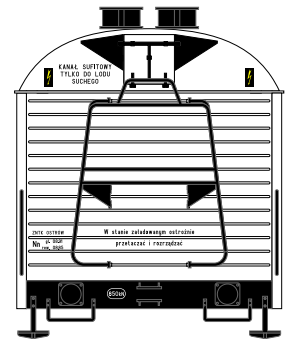
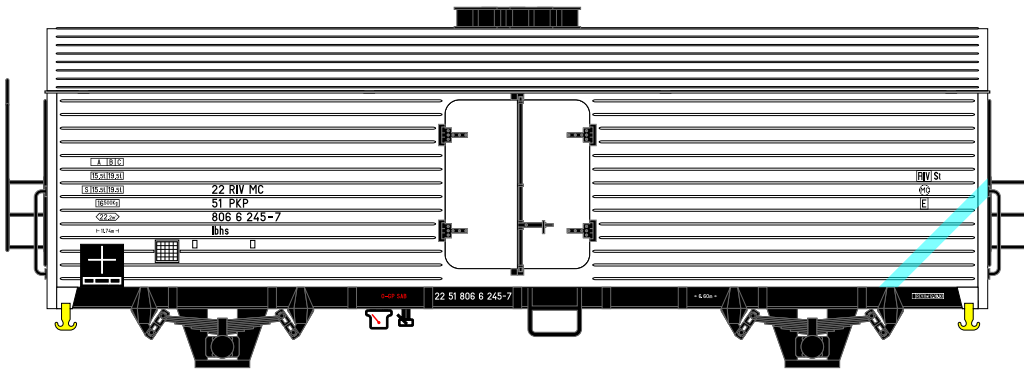


ściany czołowe przylutowa po zamontowaniu ścian bocznych i dachu.





202Lc



202L/1

